

Sinter produces centrifugal and lamellar clutches in the form of replacement parts, or as performance upgrade units for your go-kart. We drive our development of new friction materials forward to improve our clutch offering and make it suitable for even the most demanding racers.

LAMELLAR ARAMID COMPOSITE + MMC CLUTCHES

We minimized the weight of the clutch construction by combining a special friction material with the lightweight MMC middle plates, constructed with aramid – that is how we lowered the weight by 60% compared to a standard middle plate.

WEIGHT

We strive to lower the weight of the clutch plates as much as possible. We achieve that by using lightweight alloys and composite materials for the base plates, and friction materials with no metal parts for the friction interface. We use a combination of aramid + MMC for extremely lightweight clutch product.

- / DYNAMIC CHARACTERISTICS*
- / EXCELLENT TEMPERATURE RESISTANCE*
- / LONG LIFE*



CENTRIFUGAL CLUTCHES

We offer centrifugal clutches for all engine types – lame, Tm, Rotax and others.

There are two materials available:

- 1 Organic, for a non-sliding clutch in general applications, with good temperature resistance and long service life.



- 2 Special high temperature resistant material, for an extreme performance racing clutch with long service life. It can endure aggressive starts and performs well in all conditions.



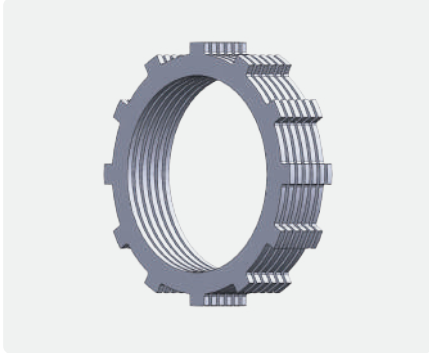
CUSTOM

Sinter's own r&d and production department can always provide custom clutch components per request. With our rich knowledge we can help the customer experiment and decide on the clutch shape and material used.

LAMELLAR CLUTCHES

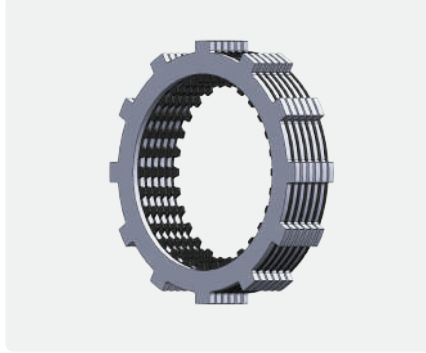
121-013-003

IAME (KZ) N° friction plates (aramid) - 6
 KIT 1 N° drive plates (MMC) - 0



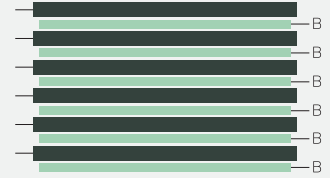
121-013-004

IAME (KZ) N° friction plates (aramid) - 6
 KIT 2 N° drive plates (MMC) - 6



ASSEMBLY

Lamellar Clutch
IAME KZ



A - Aramid Friction Plates - 3 mm thickness
B - MMC Drive Plates - 1,5 mm thickness

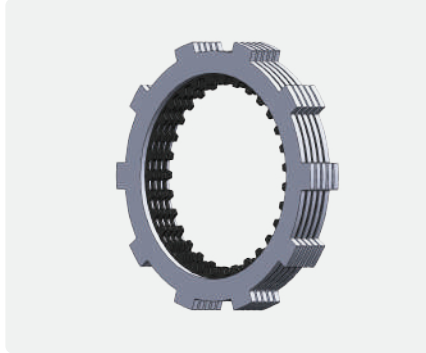
121-013-005

TM (KZ 10) N° friction plates (aramid) - 5
 KIT 1 N° drive plates (MMC) - 0



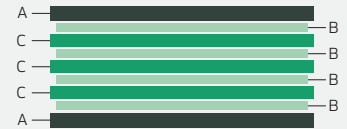
121-013-006

TM (KZ 10) N° friction plates (aramid) - 5
 KIT 2 N° drive plates (MMC) - 4



ASSEMBLY

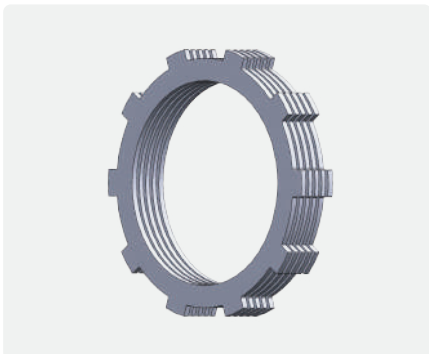
Lamellar Clutch
TM (KZ10)



A - Aramid Friction Plates - 3 mm thickness
B - MMC Drive Plates - 1,5 mm thickness
C - Aramid Friction Plates - 2,5 mm thickness

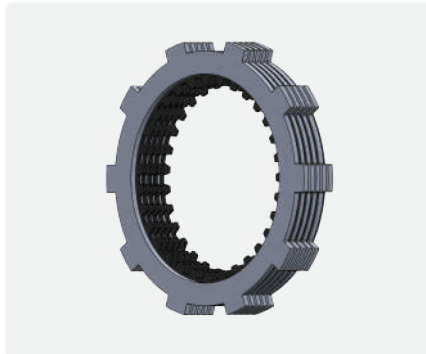
121-013-005

TM (KZ 10) N° friction plates (aramid) - 5
 KIT 1 N° drive plates (MMC) - 0



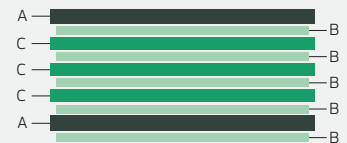
121-013-007

TM (KZ 10C) N° friction plates (aramid) - 5
 KIT 2 N° drive plates (MMC) - 5



ASSEMBLY

Lamellar Clutch
TM (KZ10 C)



A - Aramid Friction Plates - 3 mm thickness
B - MMC Drive Plates - 1,5 mm thickness
C - Aramid Friction Plates - 2,5 mm thickness

LAMELLAR CLUTCHES

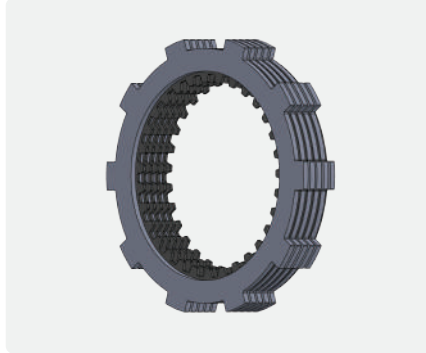
121-013-008

TM (R1) N° friction plates (aramid) - **5**
KIT 1 N° drive plates (MMC) - **0**



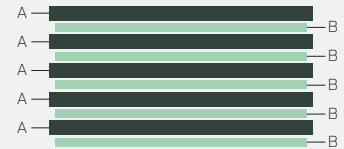
121-013-009

TM (R1) N° friction plates (aramid) - **5**
KIT 2 N° drive plates (MMC) - **5**



ASSEMBLY

Lamellar Clutch
TM (R1)



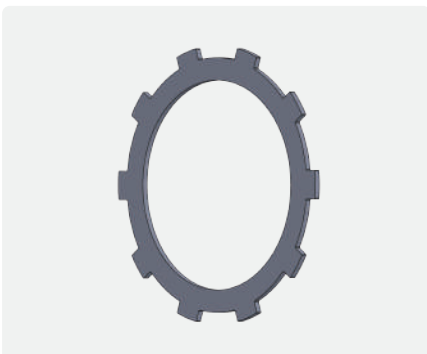
A - Aramid Friction Plates - 3 mm thickness
B - MMC Drive Plates - 1,5 mm thickness

* MMC drive plates are not included in KIT 1.

CUSTOM MADE COMBINATION – Single Piece

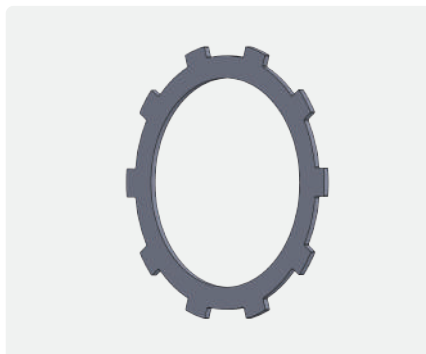
151-013-005

TM (KZ10/R1) Overall thickness (mm) - **3**
 Material - **Aramid** Inner Diameter (mm) - **100,3**



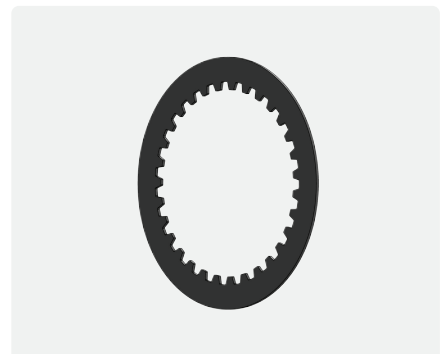
151-013-025

TM (KZ10) Overall thickness (mm) - **2,5**
 Material - **Aramid** Inner Diameter (mm) - **100,3**



151-012-006

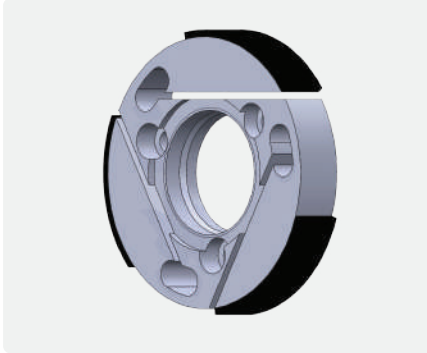
TM (KZ10/R1) Overall thickness (mm) - **1,5**
 Material - **MMC** Inner Diameter (mm) - **89,5**



CENTRIFUGAL CLUTCHES

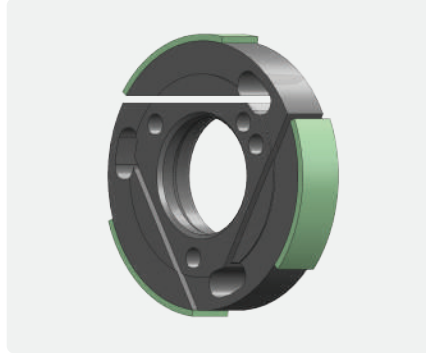
12C-084-15-23

KF Inner Diameter (mm) - **83,5**
Material - **Organic** Overall Thickness (mm) - **15**



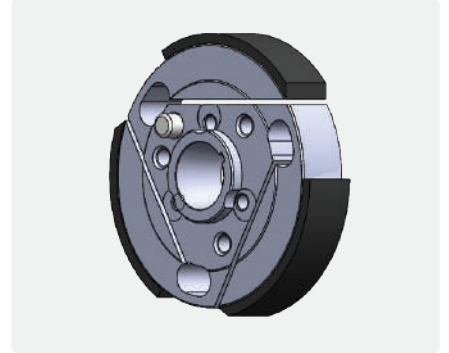
12C-084-15-24

KF Inner Diameter (mm) - **83,5**
Material - **Carbon** Overall Thickness (mm) - **15**



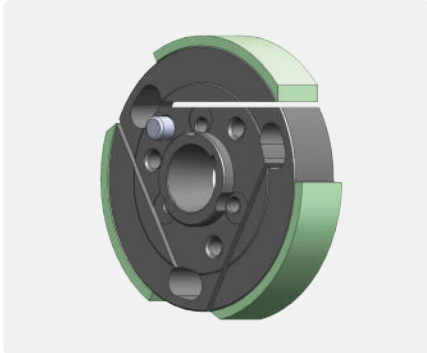
12C-084-17-11

IAME LEOPARD Inner Diameter (mm) - **84,0**
Material - **Organic** Overall Thickness (mm) - **17**



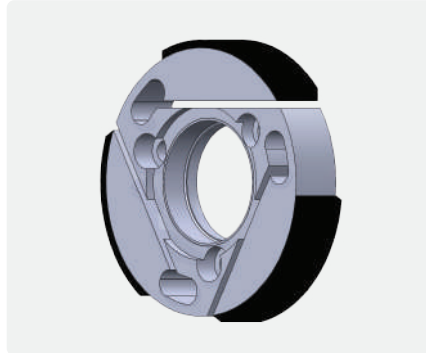
12C-084-17-12

IAME LEOPARD Inner Diameter (mm) - **84,0**
Material - **Carbon** Overall Thickness (mm) - **17**



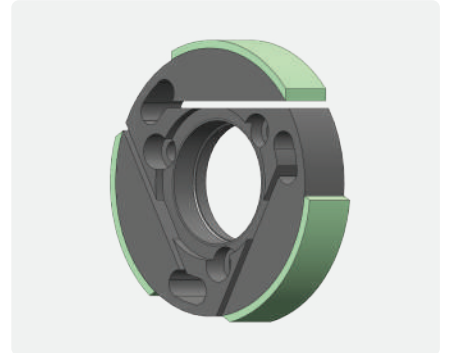
12C-084-17-01

IAME X30 (After 2013) Inner Diameter (mm) - **84,3**
Material - **Organic** Overall Thickness (mm) - **17**



12C-084-17-02

IAME X30 (After 2013) Inner Diameter (mm) - **84,3**
Material - **Carbon** Overall Thickness (mm) - **17**



12C-084-17-21

IAME X30 (Before 2013) Inner Diameter (mm) - **84,0**
Material - **Organic** Overall Thickness (mm) - **17**



12C-084-17-22

IAME X30 (Before 2013) Inner Diameter (mm) - **84,3**
Material - **Carbon** Overall Thickness (mm) - **17**





Sinter Ljubljana d.o.o.
Cesta v Mestni log 75
SI-1000 Ljubljana
Slovenia / Europe

Tel: +386 1 280 34 22
E-mail: sales@sinter.si